

From: CRN Coordinator <admin@communityrecyclers.org.nz>
Subject: CRN Aotearoa eNews
Date: 30 August 2013 12:45:54 PM NZST
To: Dorte <admin@communityrecyclers.org.nz>
Reply-To: CRN Coordinator <admin@communityrecyclers.org.nz>

CRN Aotearoa's monthly update and noticeboard.

Is this email not displaying correctly?
[View it in your browser.](#)



CRN Hui 2013

Registrations are open now. Go to <http://communityrecyclers.org.nz/hui/hui-registration-form/> to register online, and I will be sending out hardcopy invites and brochures and registration forms to all members in the next few weeks. Why not forward the information on to your Council and encourage them to send someone along too? Download the invite [here](#).

The preliminary workshop programme is now available, either on the [website](#) or by clicking [here](#).

Let me know if you've got something you would like to share at the Hui and I'll do my best to fit it in to the programme. Email me admin@communityrecyclers.org.nz

This year we've been very lucky to receive generous support from a number of organisations for the hui. Thank you: [Waste Not Consulting](#), [O-I New Zealand](#), [Eunomia Research & Consulting](#), and [Mil-tek Recycling Solutions](#)- you're awesome!

NCCR Launch new Cultivating Memories enterprise

We were sad to hear about North Canterbury Community Resources recent loss of their Council contract, but it is with great pleasure that I can share information about their new enterprise – Cultivating Memories.

Cultivating Memories produce seeded paper blooms centred with sweet chocolate hearts. Admire the beauty of your bouquet, indulge in the sweet chocolate centres, plant your seeded blooms and watch them grow into a beautiful array of wildflowers. A unique gift that goes on giving.



Cultivating Memories has been developed by North Canterbury Community Resources Ltd

to provide employment opportunities for people from all walks of life. The focus behind all development has been providing employment opportunities to disadvantaged members of their community. Each process has been broken down and designed with a view to providing employment for members of the community with intellectual or physical disabilities. NCCR believe that providing employment opportunities for everybody, not only enriches the lives of the individual but the community as a whole.

Check out the flash Cultivating Memories website: www.cultivatingmemories.co.nz

Contact NCCR on:

Ph: 03-314-8383

Email: info@cultivatingmemories.co.nz

WasteMINZ news

The Waste Management Institute of New Zealand (WasteMINZ) have got a lot going on at the moment. Here is a brief run-down of some of the most relevant news, and check out their website for further info: <http://www.wasteminz.org.nz>

Annual Conference

Register now for the [annual WasteMINZ Conference](#). This years theme is Focus on the Future. CRN members are eligible for a 10% discount on the attendance fees. CRN will also be have a trade stand so if you have any information you want to get out to the wider NZ waste sector email me to discuss admin@communityrecyclers.org.nz

Launch of the WasteMINZ Strategic Investment Fund

The WasteMINZ Board is pleased to announce the establishment of the WasteMINZ Strategic Investment Fund.

The fund will work as follows - providing WasteMINZ generates a positive financial result at the end of each financial year, any surplus generated will be allocated to the Strategic Investment Fund. Funding may then be invested into significant sector projects. This process will ensure that any surpluses are reinvested appropriately for the benefit of WasteMINZ, our members and our sector.

The fund will open for applications at Midday on Monday 12 August 2013 for a period of four weeks, closing on Sunday 8 September 2013 at 5pm.

To find out more about the fund, eligibility criteria and the application process [please click here](#). If you have any questions please contact [Paul Evans](#) directly.

WasteMINZ Board nominations open

The WasteMINZ Board consists of six WasteMINZ financial members who are elected for a term of two years. Three of the six elected Board members complete their two-year terms at this years Annual General Meeting. As such nominations are now open. Nominations must be received by WasteMINZ no later than 5pm Tuesday 10 September 2013.

For more information click [here](#).

Thank you Payroll

Thank you Payroll provides a free payroll intermediary service for small businesses and charities in New Zealand.

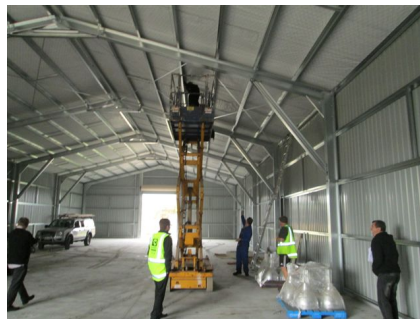
The general idea is that sorting out staff payroll can be time consuming and stressful, taking up time that could be more usefully spent on core business, so we've developed a free payroll services for organisations and companies with less than 50 employees.

We use a government subsidy to pay our staff, who sort out taxes, student loans, leave etc. every week, leaving you free to concentrate on providing services and creating social change.

We are also planning to funnel our profits into a philanthropic trust. By mid next year we're hoping to be able to provide small grants to non-profits around the country. It's a win-win-win sort of system: charities get a free payroll service so staff can spend more time on core business; the government gets tax data in an easier-to-use online format; and we get to pay people and create a new small grant making body for New Zealand :)

Signing up is really simple and can be done online at www.thankyoupayroll.co.nz or call our free call number on [0800 895 146](tel:0800895146)

New Home for the Sustainable Whanganui Trust



The Whanganui Environment Base is now relocated at the new Whanganui Resource Recovery Centre, and all is open for business

Minister Amy Adams opened WRRC officially on 16th August. Here are some pictures of the new site and the Environment Base.

Contact The Sustainable Whanganui Trust on:

A: 81 Maria Place, Whanganui

P: +64 6 345 6000

E: sustainablewhanganui@gmail.com

W: <http://sustainablewhanganui.org.nz>



Auckland WMIF Fund

The second round of the Auckland Council Waste Minimisation and Innovation Fund (WMIF) opens for applications on Tuesday 1st October.

The fund is open to community groups, businesses, iwi/Maori organisations, educational institutions and other community-based organisations with great ideas for waste reduction and minimisation.

For more information click [here](#).

[friend on Facebook](#) | [forward to a friend](#)

*Copyright © *2013 Community Recycling Network Aotearoa, All rights reserved.*

Our mailing address is:

87 Fairview Crescent
Waiheke Island
Auckland
New Zealand 1081

[unsubscribe from this list](#) | [update subscription preferences](#)

This email was sent to admin@communityrecyclers.org.nz
[why did I get this?](#) [unsubscribe from this list](#) [update subscription preferences](#)
Community Recycling Network Aotearoa · 87 Fairview Cres · Rocky Bay · Waiheke Island, Auckland 1081

MailChimp